

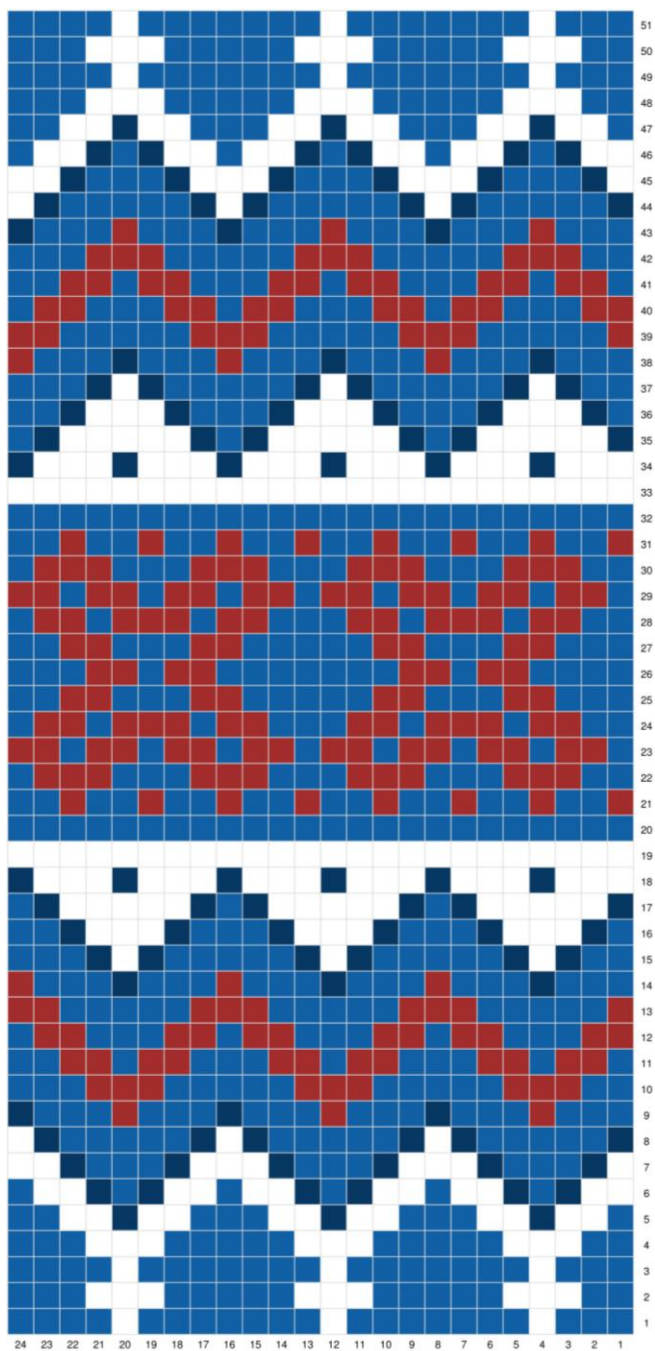


# LOST IN NY 2.0

**A KNITS N KNACKS PATTERN  
DESIGNED BY ATHENA FORBES**

The pattern and photographs contained in this document are property of Knits N Knacks. This pattern is available for personal use, if you sell any items made from this pattern, credit to Knits N Knacks ([www.cozyhappyheads.com](http://www.cozyhappyheads.com)) must be on every label and/or listing. NO unauthorized reproduction in whole or in part, or distribution of this pattern is allowed. If you need any help with our patterns, please contact us at [cozyhappyheads@gmail.com](mailto:cozyhappyheads@gmail.com)

Copyright: Knits N Knacks/Athena Forbes 2024 Pg.1



**Materials:**

**Berroco Vintage DK**

-142 yards **Dungaree (lighter blue),**

-70 yards **Mochi (white),**

-24 yards **Dark Denim (Dark blue)**

-145 yards for the inner lining (I used dark blue)

-I had to use a fingering held double for the dark red and used 73 yards of **Balmoral sock yarn (extra yardage of each needed for pompom)**

-3.5mm and 4mm 16" circular needles

-4mm crochet hook

-longer circular or DPNs for decreases

-Scissors, Darning needle, Stitch marker.

**Gauge:** 11 stitches by 13 rows in a 2" square in colorwork with smaller needles

**Size:** Adult Med/Lg

**Version 2 of the Lost in NY hat had me staring at a lot of screen shots haha! So it is more accurate to the movie but has you work 3 colors at a time in a few spots.**

**(If you want to be super accurate to the movie, end chart after the top red zigzag then move to decreases OR work the whole chart and simply cinch up the hat without working decreases. I find it fits an adult better with the whole chart and decreases.)**

**Pattern:**

**-Using a provisional crochet cast on and your inside/lining color, cast on 108 stitches on 4mm needles. Join in the round and work in stockinet all around until it measures 6 inches tall.**

**-Switch to 3.5mm needles while increasing to 120 stitches. (K9, M1) repeat around.**

**-Switch to the lighter blue color and knit 2 more inches then begin working from chart.**

**Decreases:**

**-After chart work one more round in light blue then decrease as follows**

- 1- K2tog, K8. Repeat around**
- 2 and every even round- K all stitches**
- 3- K2tog, K7. Repeat around**
- 5- K2tog, K6. Repeat around**
- 7- K2tog, K5. Repeat around**
- 9- K2tog, K4. Repeat around**
- 11- K2tog, K3. Repeat around**
- 13- K2tog, K2. Repeat around**
- 15- K2tog, K1. Repeat around**
- 17- K2tog all around**

**-Cut yarn and weave through remaining live stitches, cinch up and weave in all ends.**

**-Put the lining back on the 4mm needles and with the hat inside out and folded to where you want the brim, knit to the top crosses/plus signs of the chart (about 8" of the inside color) and repeat the decreases for the inner liner of the hat. In this way the hat will be fully lined. (The last repeat for each round of decrease for the liner will have less stitches since there are less sts altogether.)**

**-I used a 3 3/8" Pompom maker with all colors held together to make the pompom and tied the pom through both layers of hat to hold them together.**

**I hope you enjoy this free chart as much as I enjoyed making it; don't forget to tag us when you share! Instagram: @knitsnknacks**